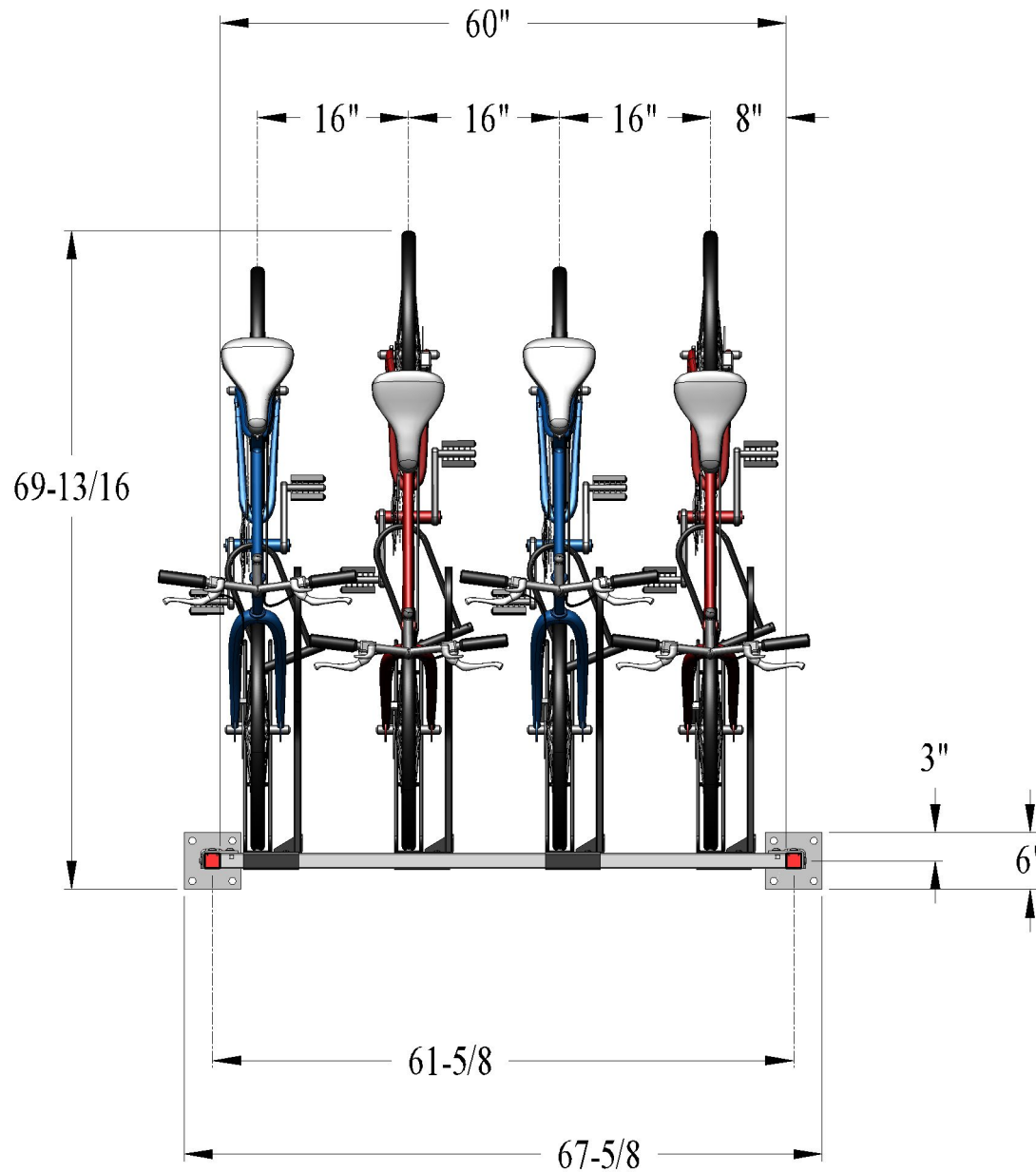


Part #17491



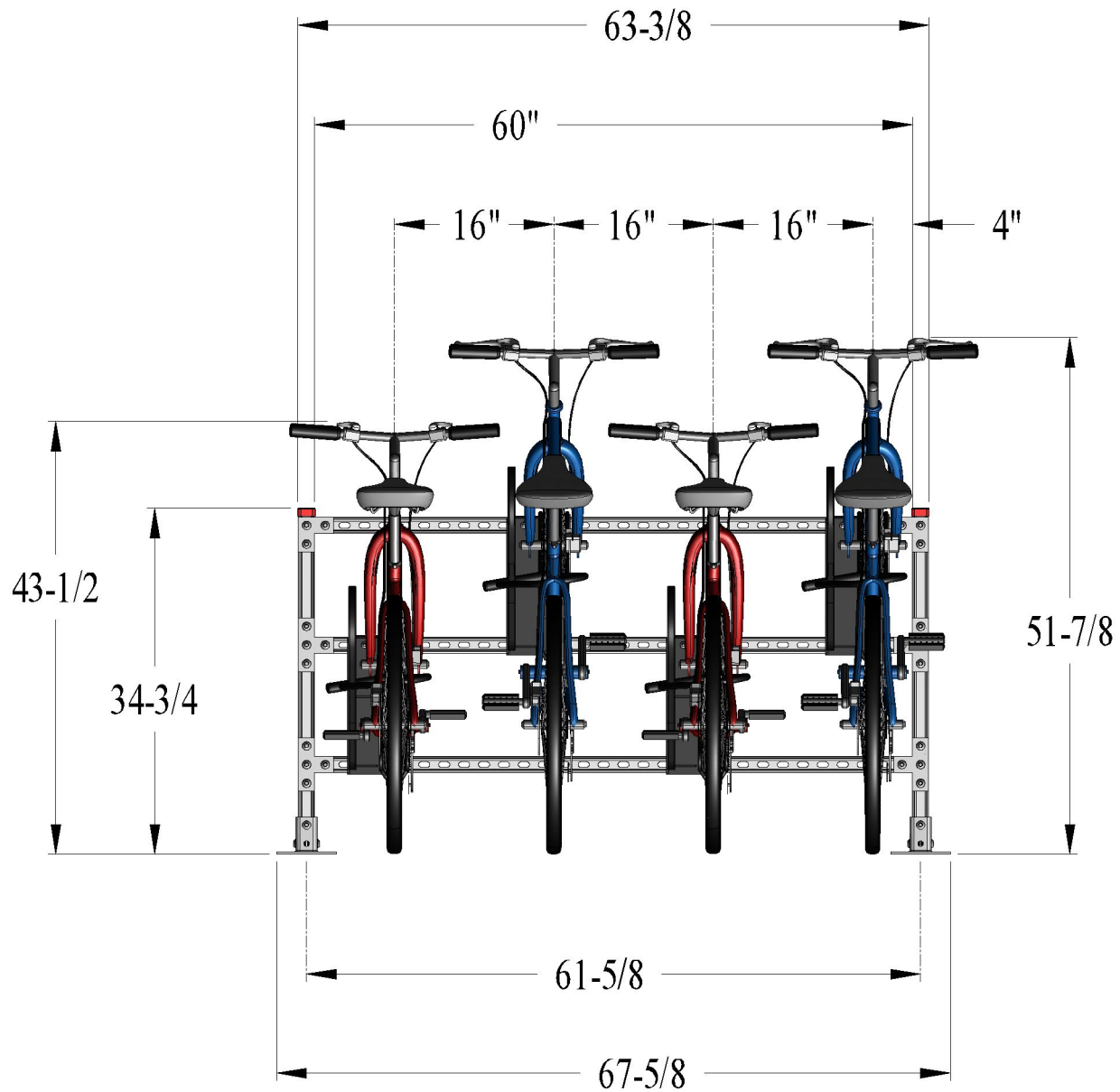
Bike Stall {4-Bike} U-Strut  
Post Base {Straight} Master {Iso}

Part #17491

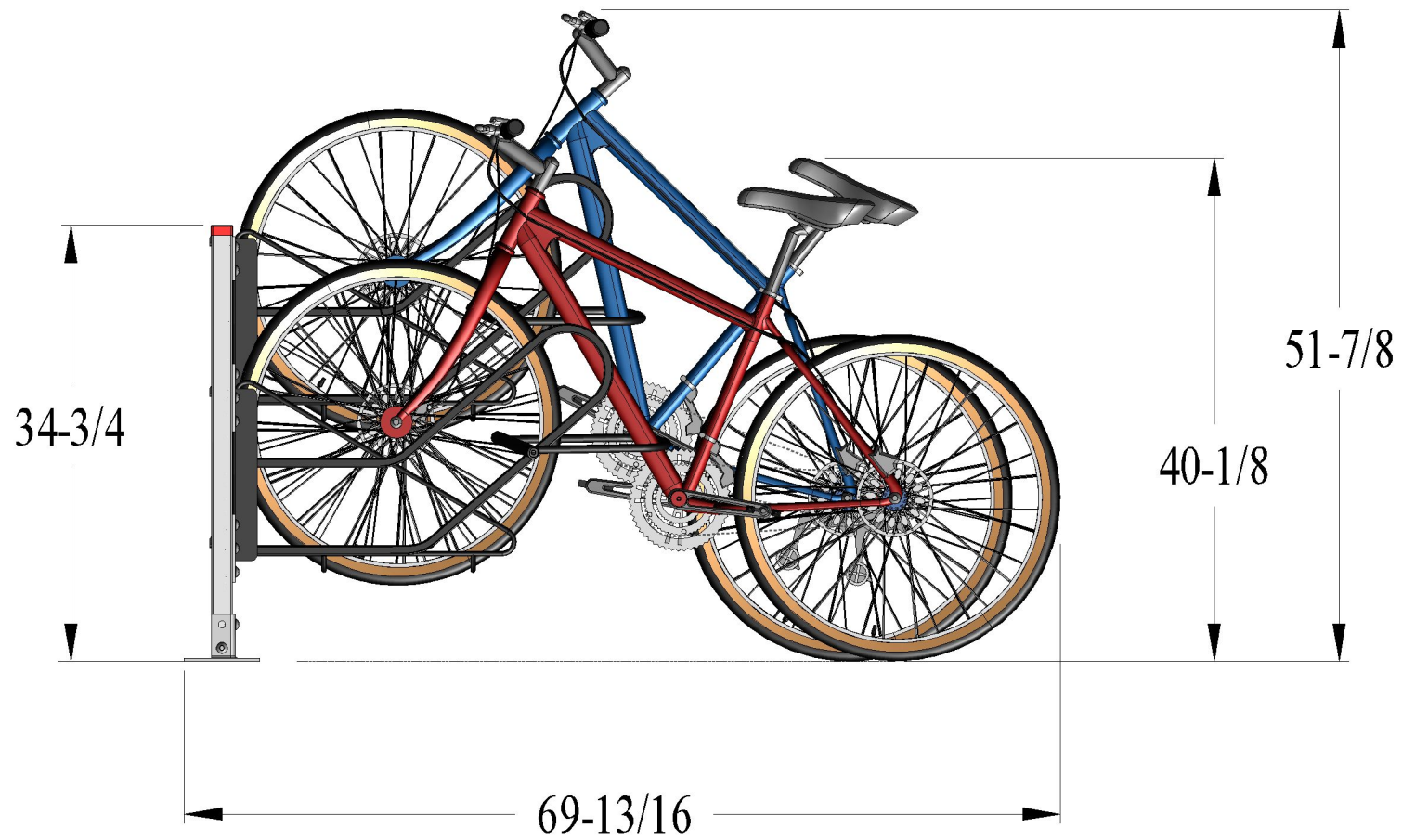


Bike Stall {4-Bike} U-Strut  
Post Base {Straight } Master {Top} Dim's

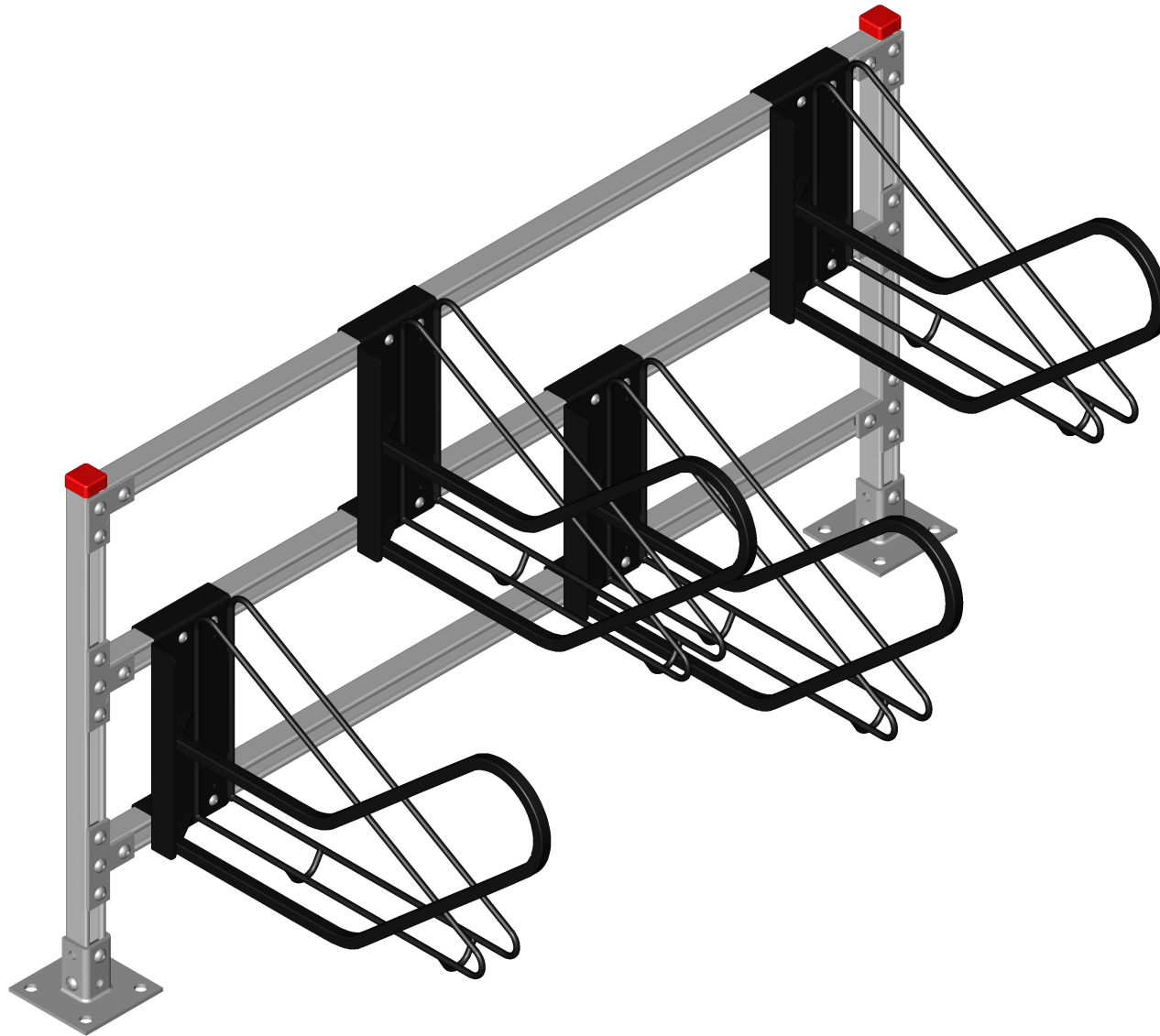
Part #17491



Bike Stall {4-Bike} U-Strut  
Post Base {Straight } Master {Front} Dim's

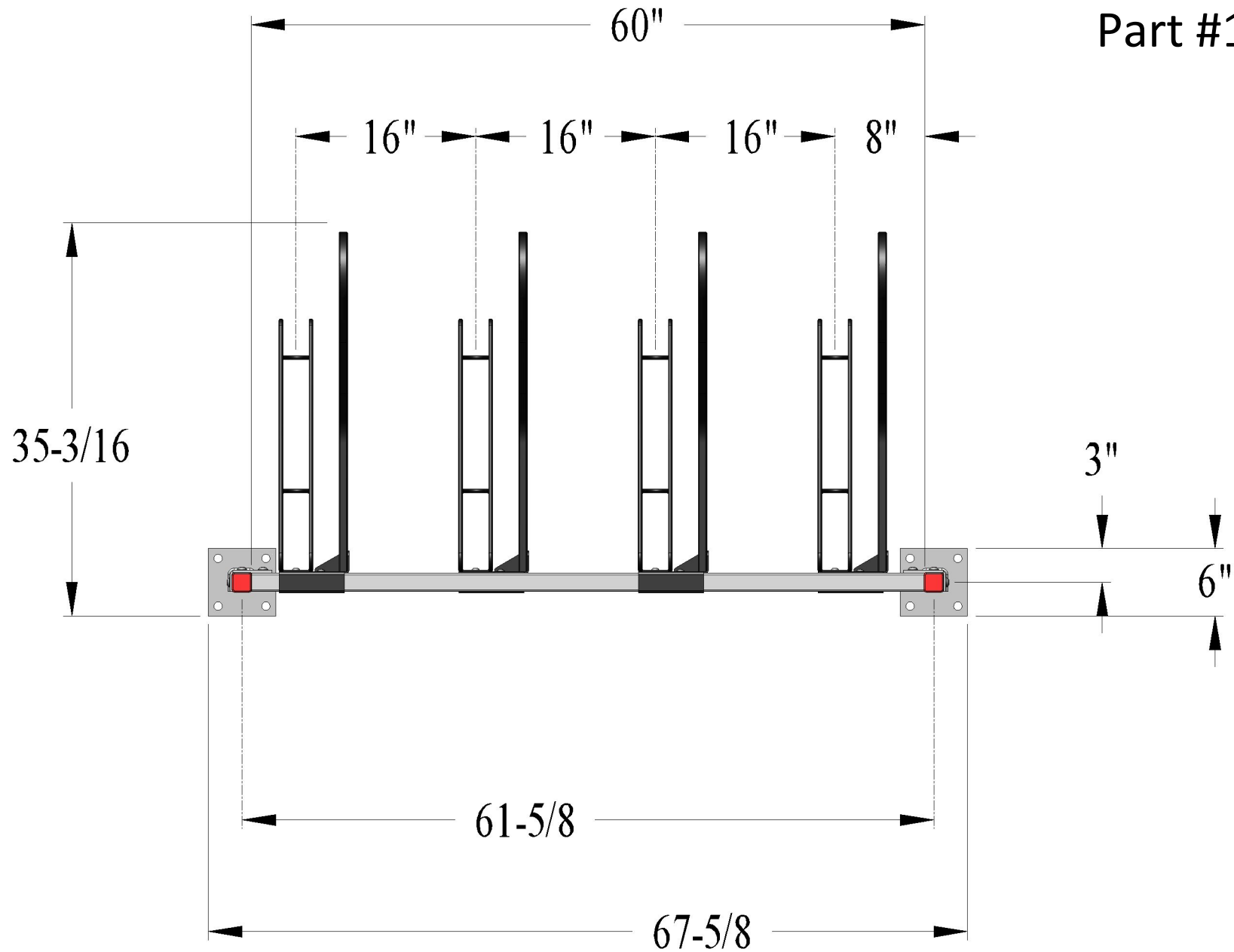


Part #17491



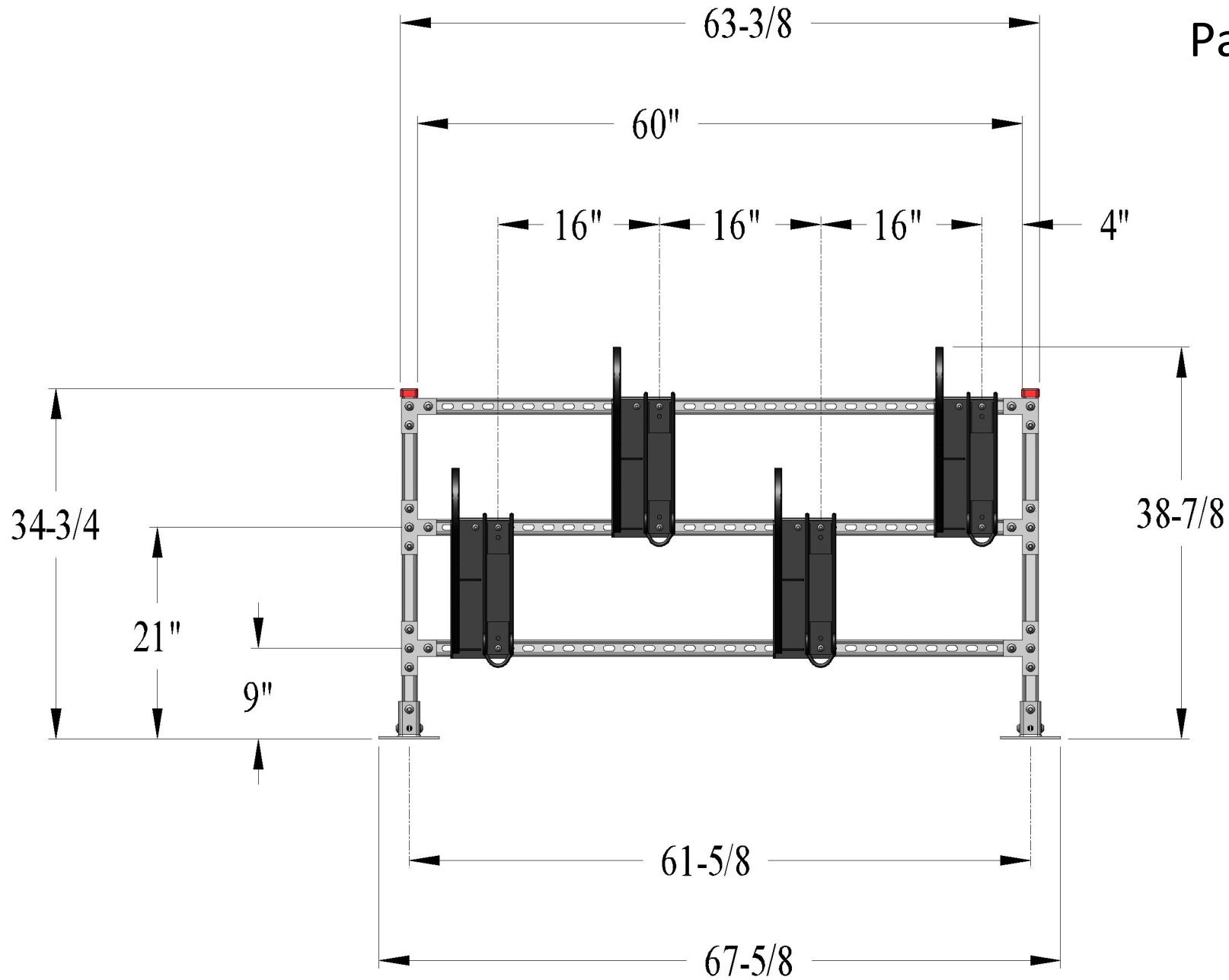
Bike Stall {4-Bike} U-Strut  
Post Base {Straight} Assembly {Iso}

Part #17491

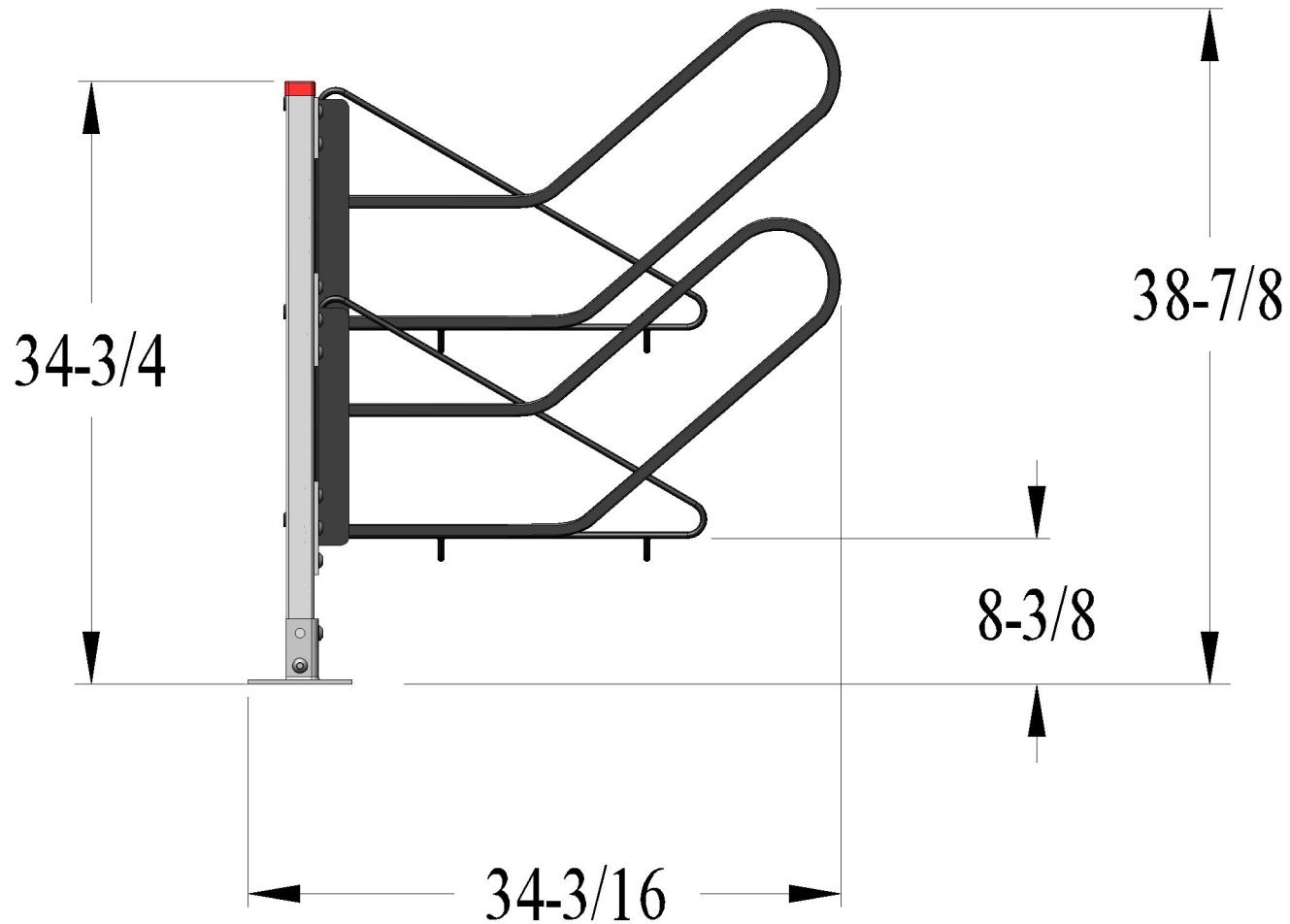


Bike Stall {4-Bike} U-Strut  
Post Base {Straight} Assembly {Top} Dim's

Part #17491



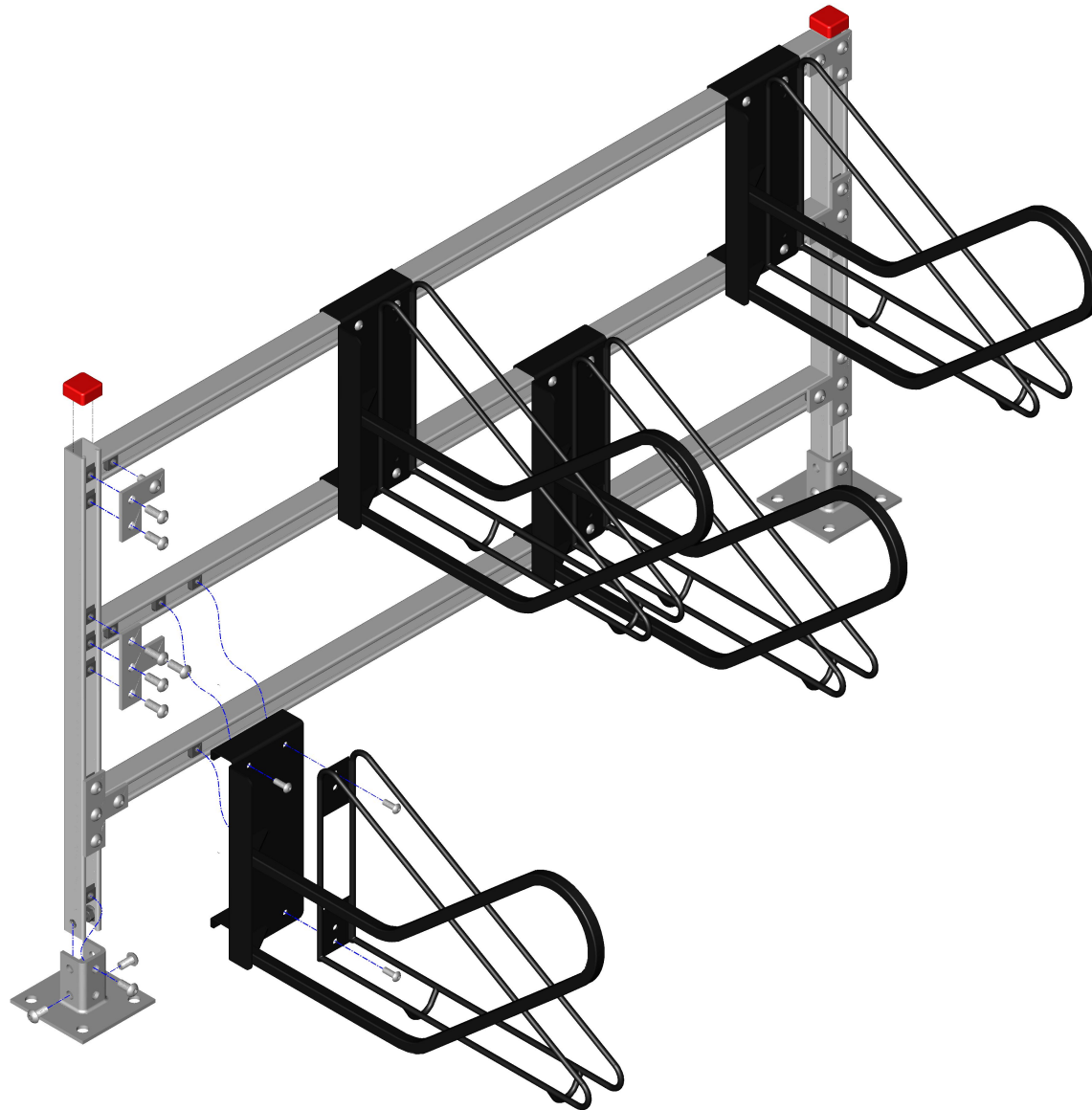
Bike Stall {4-Bike} U-Strut  
Post Base {Straight} Assembly {Front} Dim's



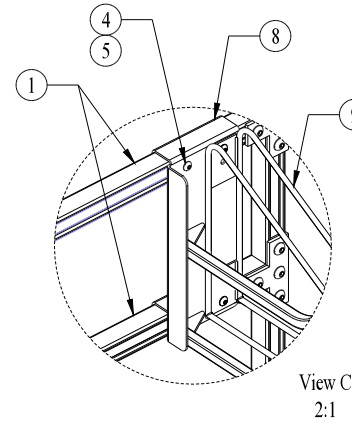
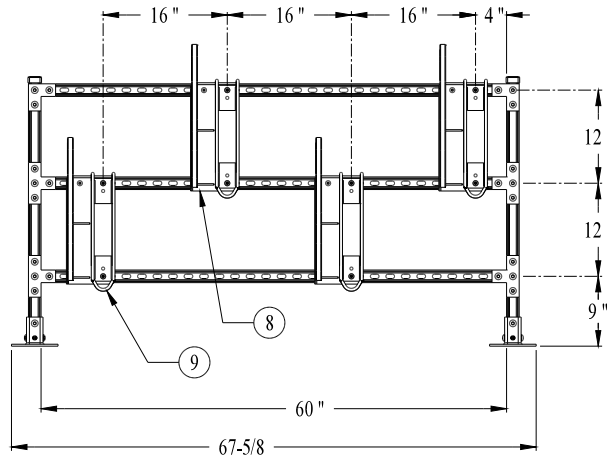
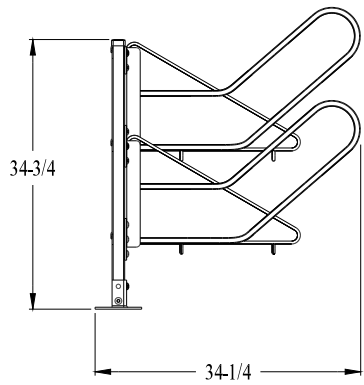
Bike Stall {4-Bike} U-Strut  
Post Base {Straight} Assembly {Side} Dim's



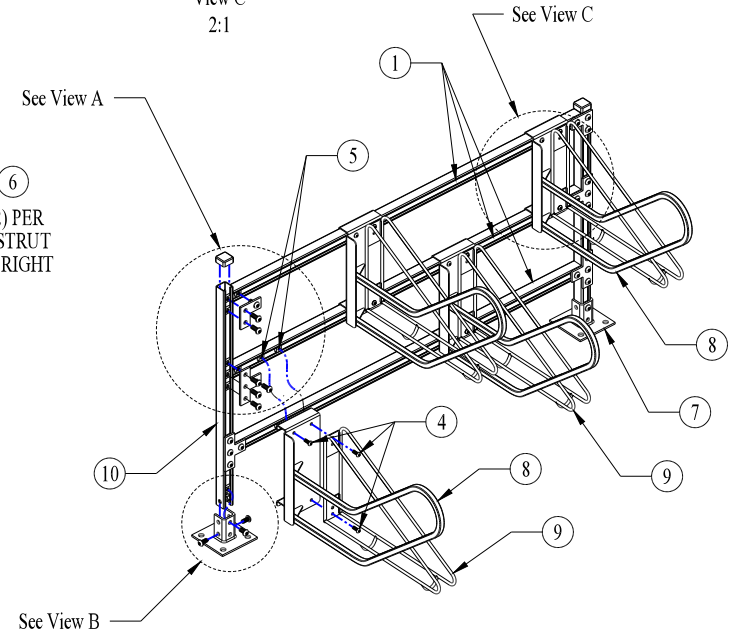
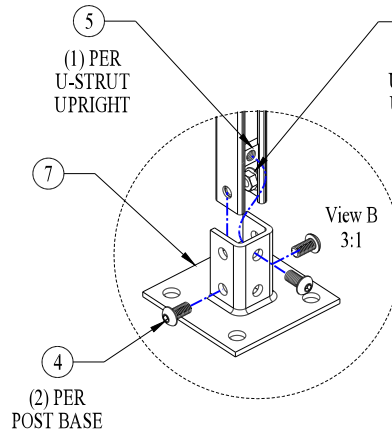
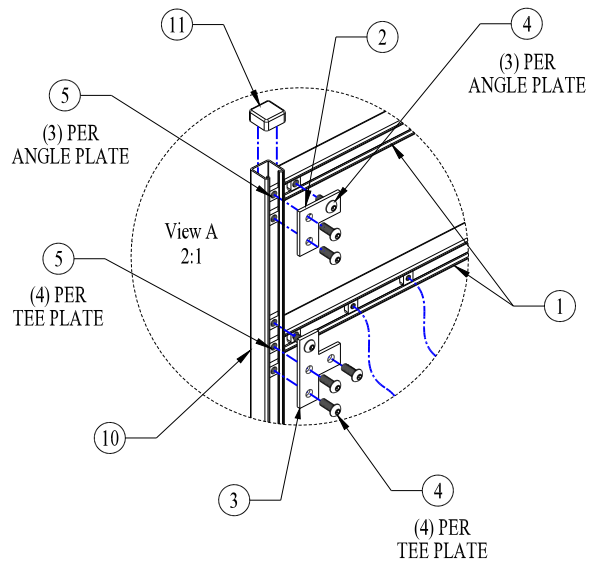
Part #17491



Bike Stall {4-Bike} U-Strut  
Post Base {Straight} Assembly {Exploded}



ITEM	QTY	DESCRIPTION	PART NO.
1	3	U-STRUT {SLOTTED} SPANNER x 60" LG.	17520
2	2	ANGLE PLATE	17528
3	4	TEE PLATE	17524
4	40	3/8-16NC x 1" LG. {TORX} S/S BHCS	12724
5	36	3/8-16NC U-STRUT {ZINC} NUT	17525
6	4	3/8-16NC SERRATED {ZINC} FLANGE NUT	19567
7	2	U-STRUT {POST} BASE	17490
8	4	LOCK BAR WELDMENT	17549
9	4	WALL-RACK {BLACK} POWDER COATED	17502
10	2	U-STUT {PLAIN} UPRIGHT x 34-3/8" LG.	17489
11	2	U-STRUT {PLASTIC} END CAP	17530



**SINGLE-SIDED  
HIGH DENSITY**

**NOTES:**

1. ALL MATERIALS MUST BE CLEAN AND FREE OF MILL LUBRICATION
2. ANY BLEMISHES OR RUST WILL NOT BE ALLOWED ON COMPLETED PRODUCTS
3. FOR "TAMPERPROOF" FASTENERS USE 3/8-16NC S/S TORX {PINNED} BHCS {17590} IN PLACE OF ITEM #4

REV	DESCRIPTION	DATE
C	REDRAWN WITH DESIGN CHANGES	10/28/13
B	ADDED CROSS TUBE PER RICHARD HARTIGER	03/07/13
A	RELEASE FOR PRODUCTION	11/28/12

SHEET 1 OF 1		WALL-RACK {CORRAL} U-STRUT {STRAIGHT}						
TOLERANCES UNLESS OTHERWISE SPECIFIED: +/-		<p align="center"><b>Cycle Safe</b></p> <p align="center">5211 CASCADE RD SE, SUITE 210 GRAND RAPIDS, MI 49546 www.cyclesafe.com</p>						
.X	.030							
.XX	.010							
.XXX	.005							
ANGLE	1/2°	<table border="1"> <tr> <td>APPROVED</td> <td>DATE</td> </tr> <tr> <td>GERI MOHR</td> <td>11/28/12</td> </tr> <tr> <td>CHECKED</td> <td>03/07/13</td> </tr> </table>	APPROVED	DATE	GERI MOHR	11/28/12	CHECKED	03/07/13
APPROVED	DATE							
GERI MOHR	11/28/12							
CHECKED	03/07/13							
SIZE D	POST BASE {4-BIKE} ASSEMBLY	17491	REV C					